

# COMMUNITY HEALTH

## Career Pathways Overview

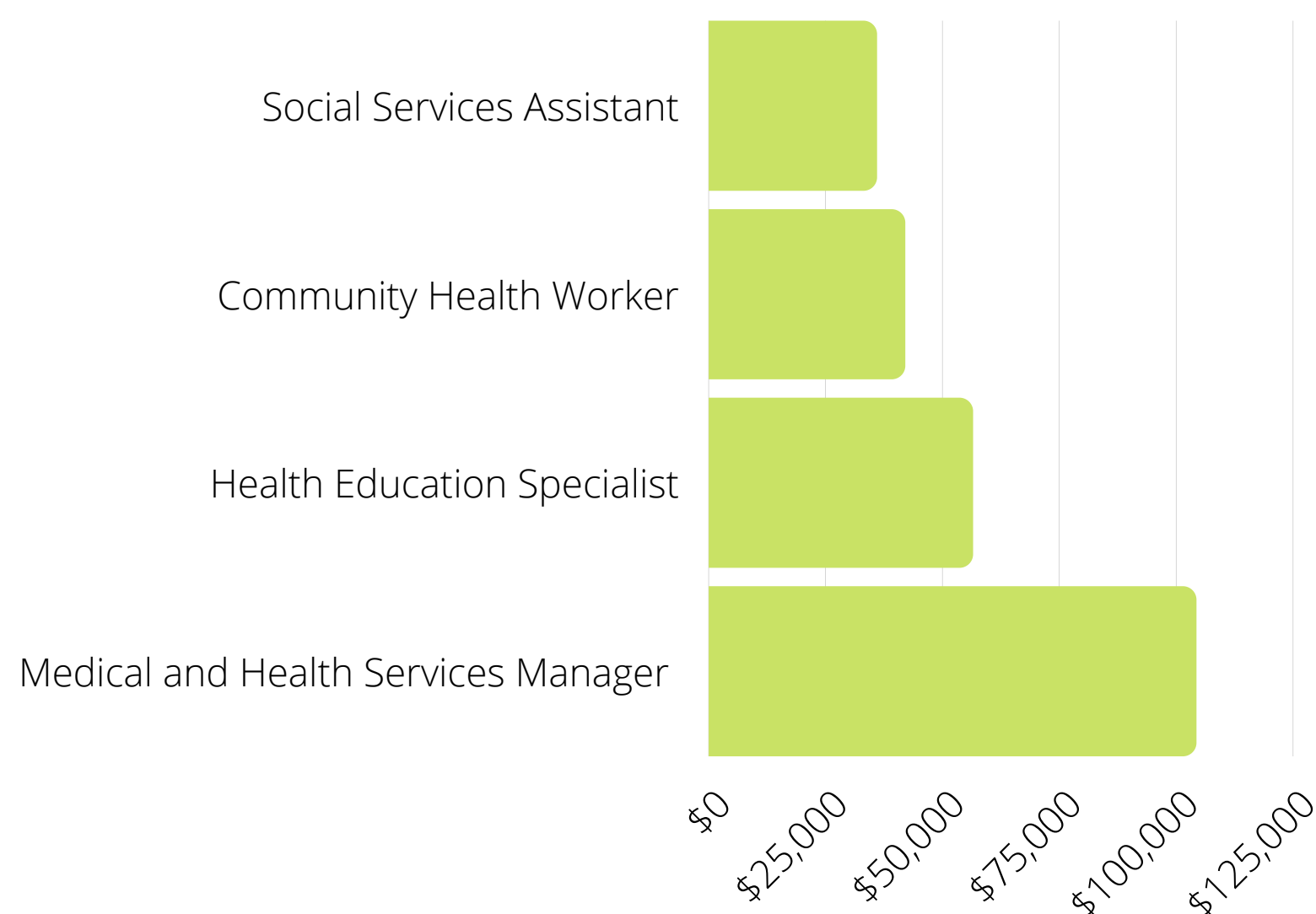


### OVERVIEW

Community healthcare professionals are frontline public health workers who have a close understanding of the community they serve. This trusting relationship enables them to serve as a liaison/link/intermediary between health/social services and the community to facilitate access to services and improve the quality and cultural competence of service delivery.

### THE STATISTICS

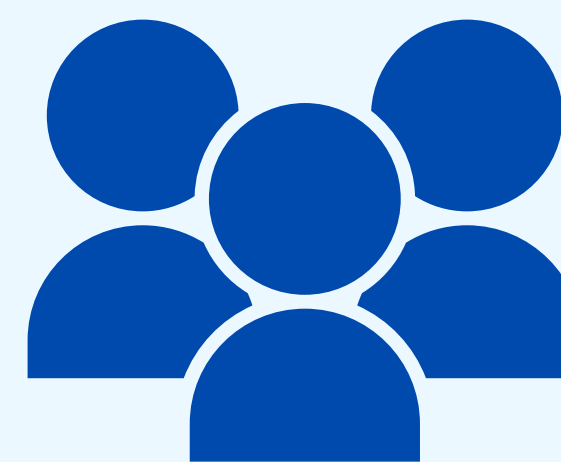
Careers within this field include Social Services Assistant, Community Health Worker, Health Education Specialist and Medical and Health Services Manager. The National median ranges are listed below and are directly correlated with education and experience. The outlook for this pathway is projected to grow 19% from 2019 - 2029.



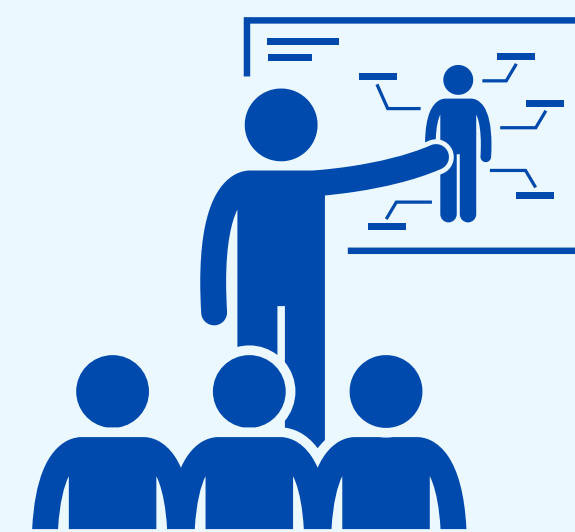
### PATHWAY



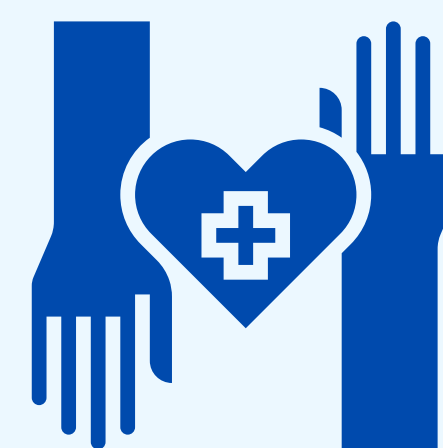
**SOCIAL SERVICES ASSISTANT**



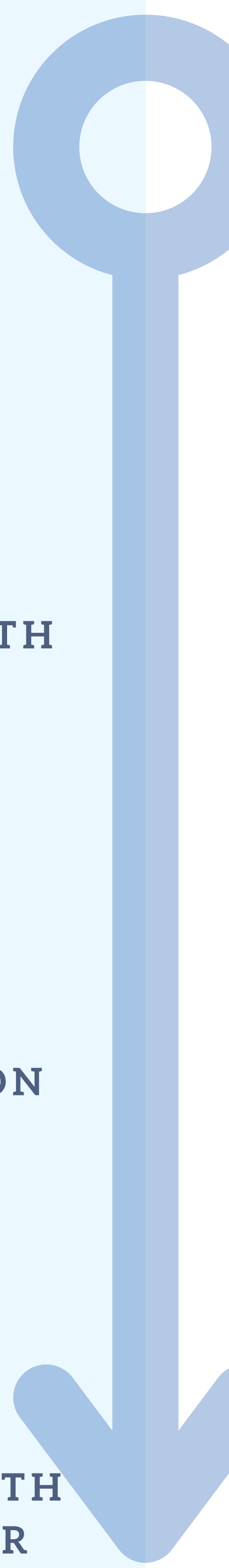
**COMMUNITY HEALTH WORKER**



**HEALTH EDUCATION SPECIALIST**



**MEDICAL AND HEALTH SERVICES MANAGER**



# COMMUNITY HEALTH

## Career Pathways Overview



### SOCIAL AND HUMAN SERVICES ASSISTANT

**Social and human service assistants** provide client services, including support for families, in a wide variety of fields, such as psychology, rehabilitation, and social work. They have many job titles, including case work aide, clinical social work aide, family service assistant, social work assistant, addictions counselor assistant, and human service worker.

**Credentials Required:** High School Diploma

**Outlook:** Projected 17% growth between 2019-2029

### COMMUNITY HEALTH WORKERS

**Community health workers** (CHWs) are non-clinical healthcare personnel that serve as a bridge between the community and the healthcare service providers. CHWs are the trusted frontline workers who have in-depth knowledge of the community.

**Credentials Required:** High School Diploma, Associates Degree, and professional certification

**Outlook:** Projected 13% growth between 2019-2029

### HEALTH EDUCATION SPECIALISTS

**Health education specialists**, or health educators plan, provide and manage health education programs that help individuals, families, and their communities maximize and maintain healthy lifestyles.

**Credentials Required:** Bachelor's Degree, Certified Health Education Specialist (CHES), Master Certified Health Education Specialist (MCHES)

**Outlook:** Projected 13% growth between 2019-2029

### MEDICAL AND HEALTH SERVICES MANAGER

**Medical and health services managers**, also called healthcare executives or healthcare administrators, plan, direct, and coordinate medical and health services. They may manage an entire facility, a specific clinical area or department, or a medical practice for a group of physicians.

**Credentials Required:** Bachelor's Degree in health administration/management, professional certification

**Outlook:** Projected 13% growth between 2019-2029